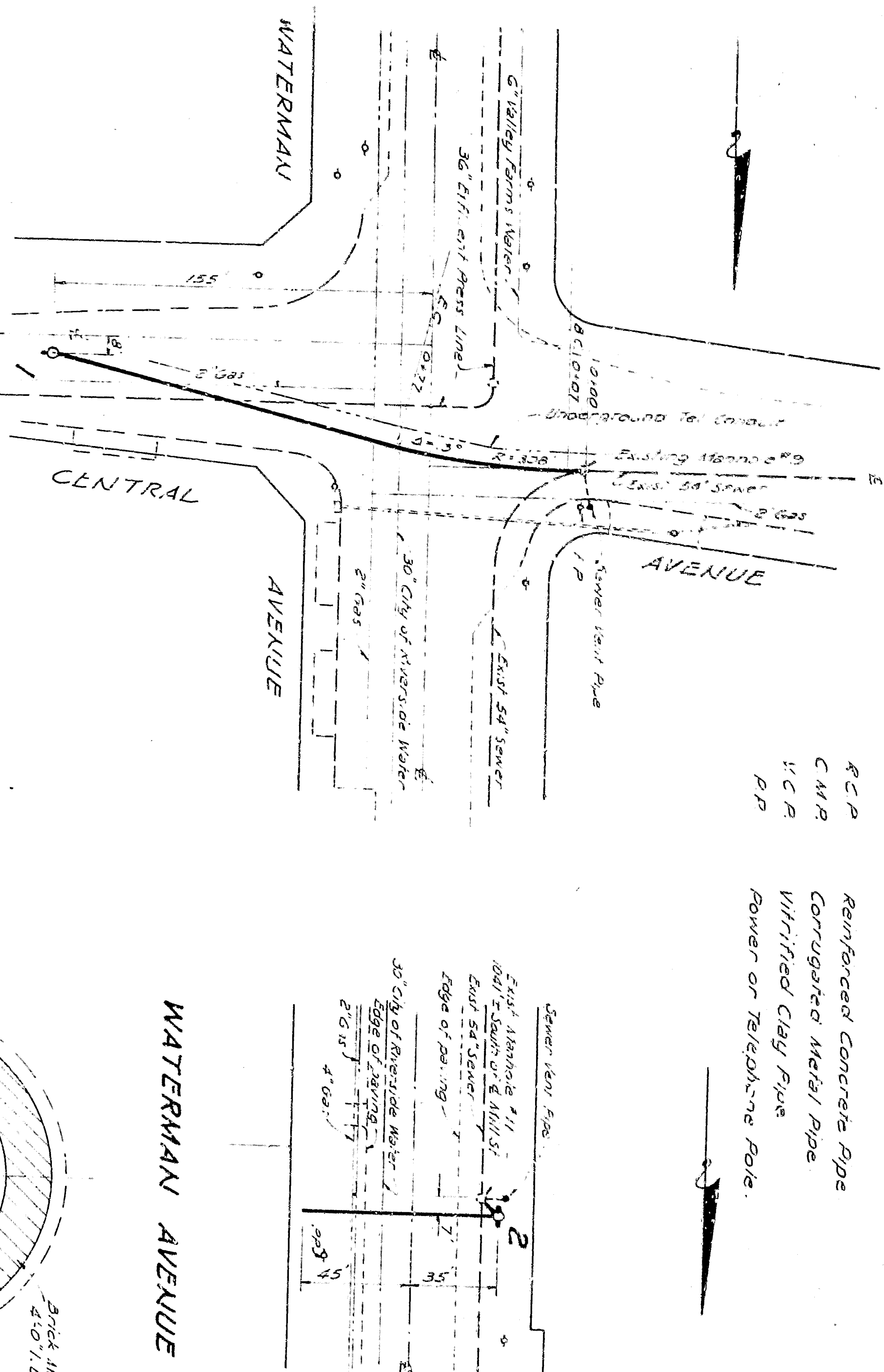


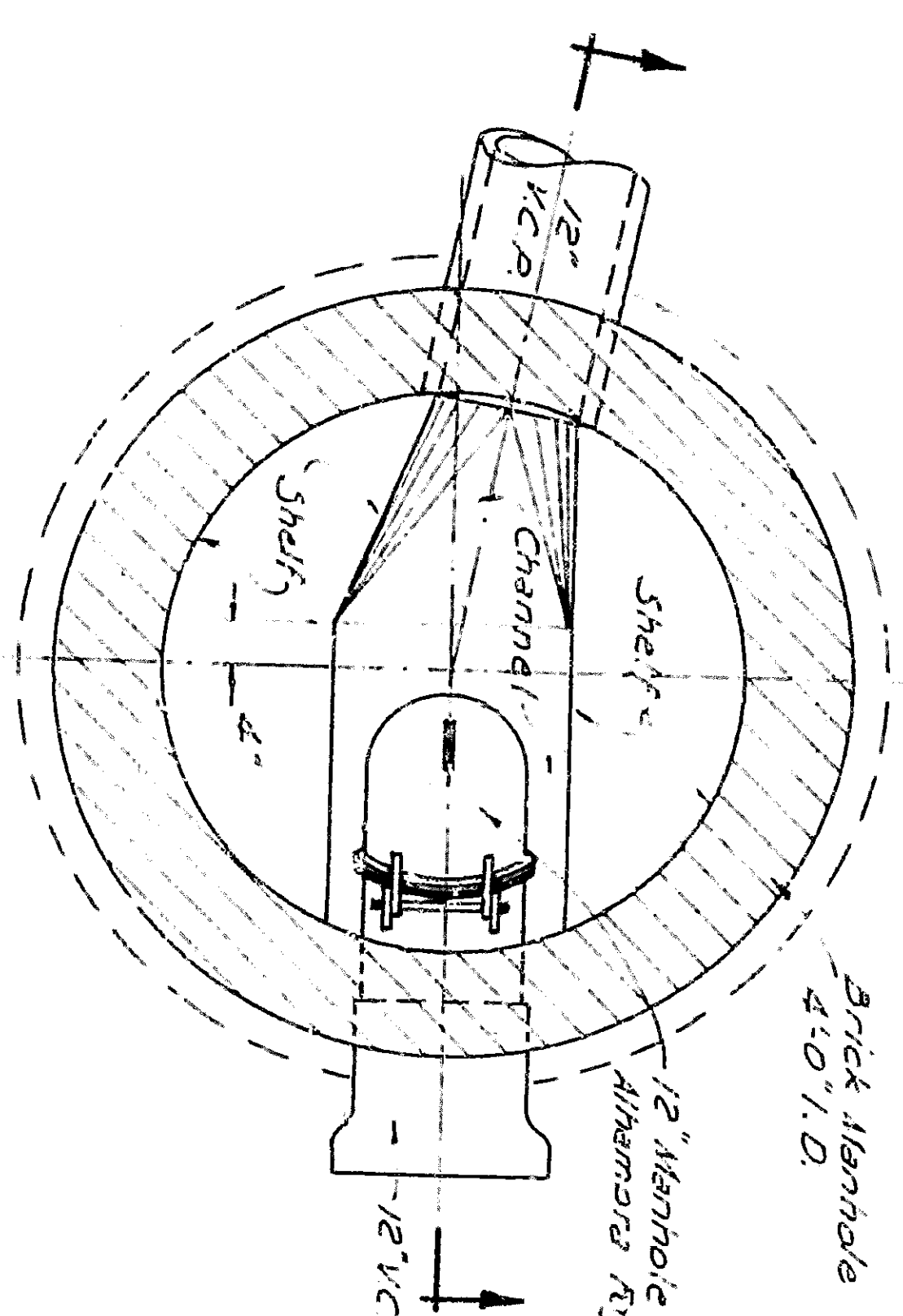
NOTE: All new work shown on this sheet is in San Bernardino County.



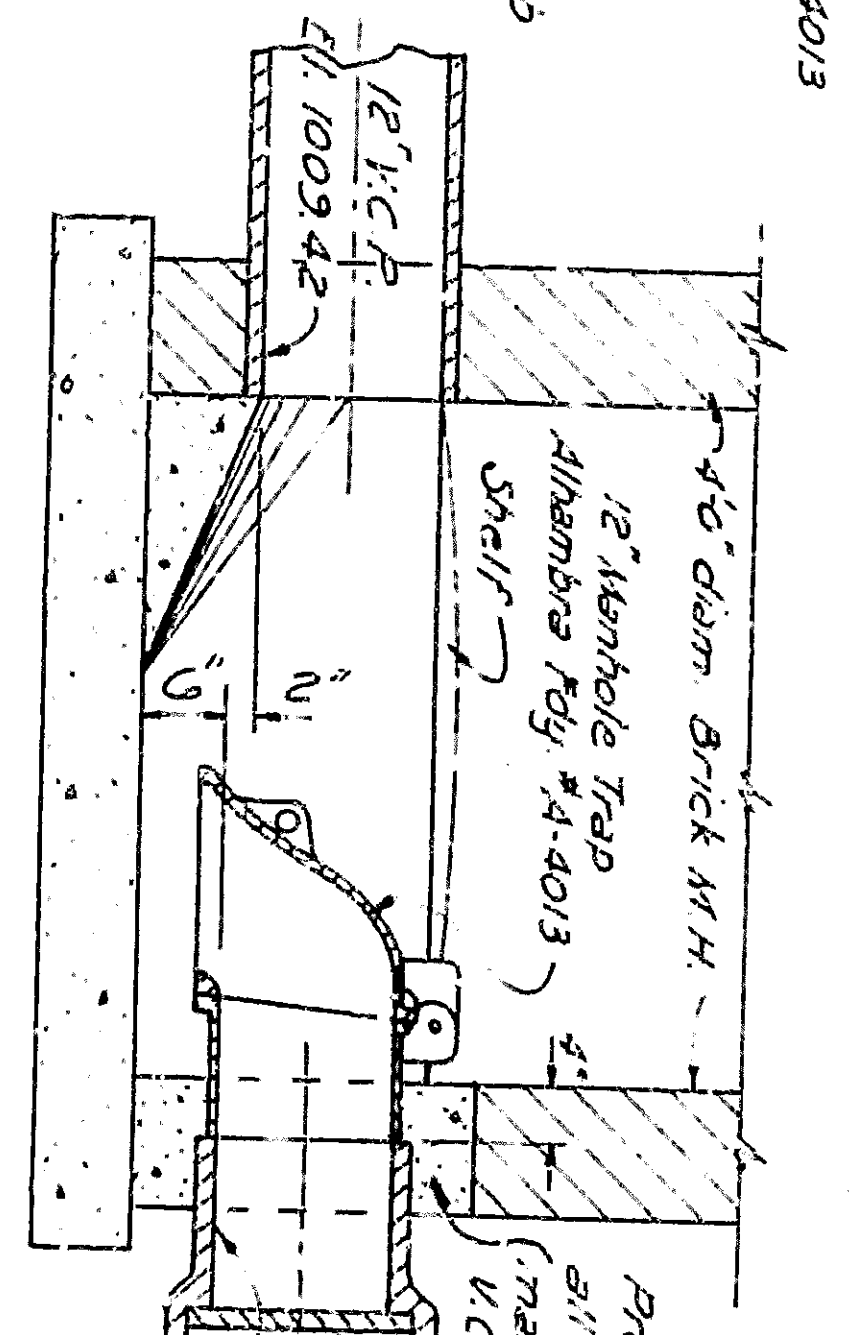
- LEGEND**
- Plan of Sewer Main
 - Plan of Sewer Manhole
 - Plan of 6" Pipe Branch with Wedge-Lock Stopper
 - Profile of Ground Line
 - Profile of Sewer Manhole
 - Elevation of Sewer Invert
 - Reinforced Concrete Pipe
 - Corrugated Metal Pipe
 - Wired Clay Pipe
 - Power or Telephone Pole

INTERSECTION - WATERMAN AVE. & CENTRAL AVE.

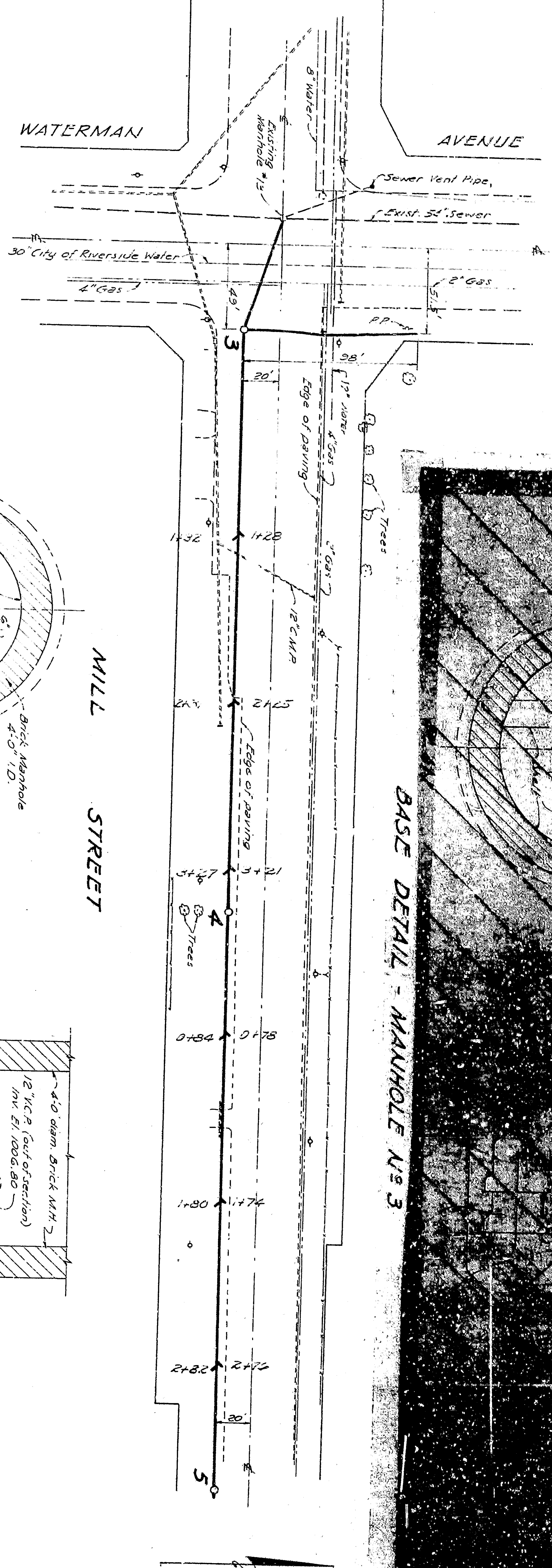
NOTE: No construction shown on this sheet is in San Bernardino County.



**PLAN
BASE DETAIL - MANHOLE No. 1**



SECTION

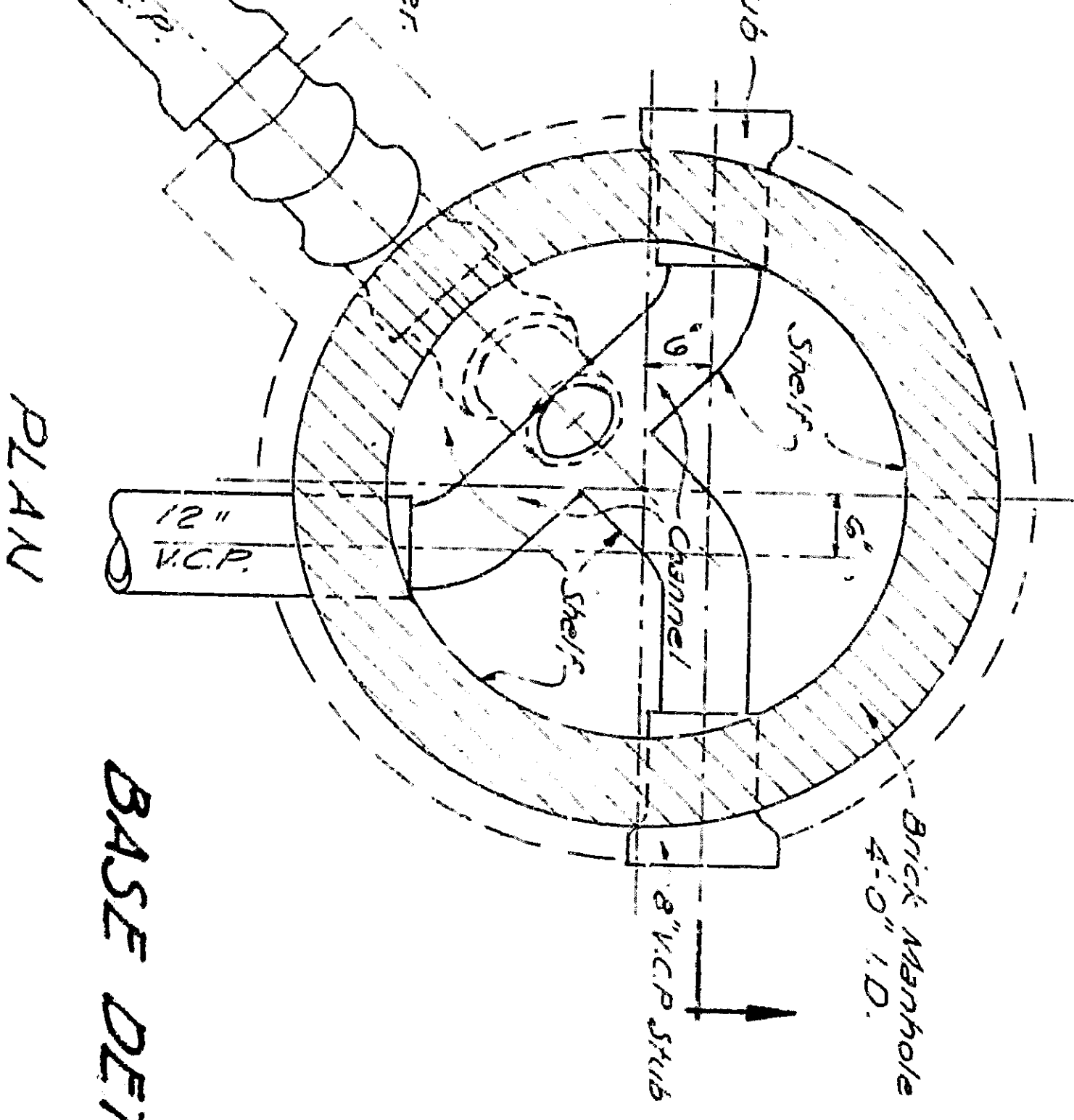


NOTES

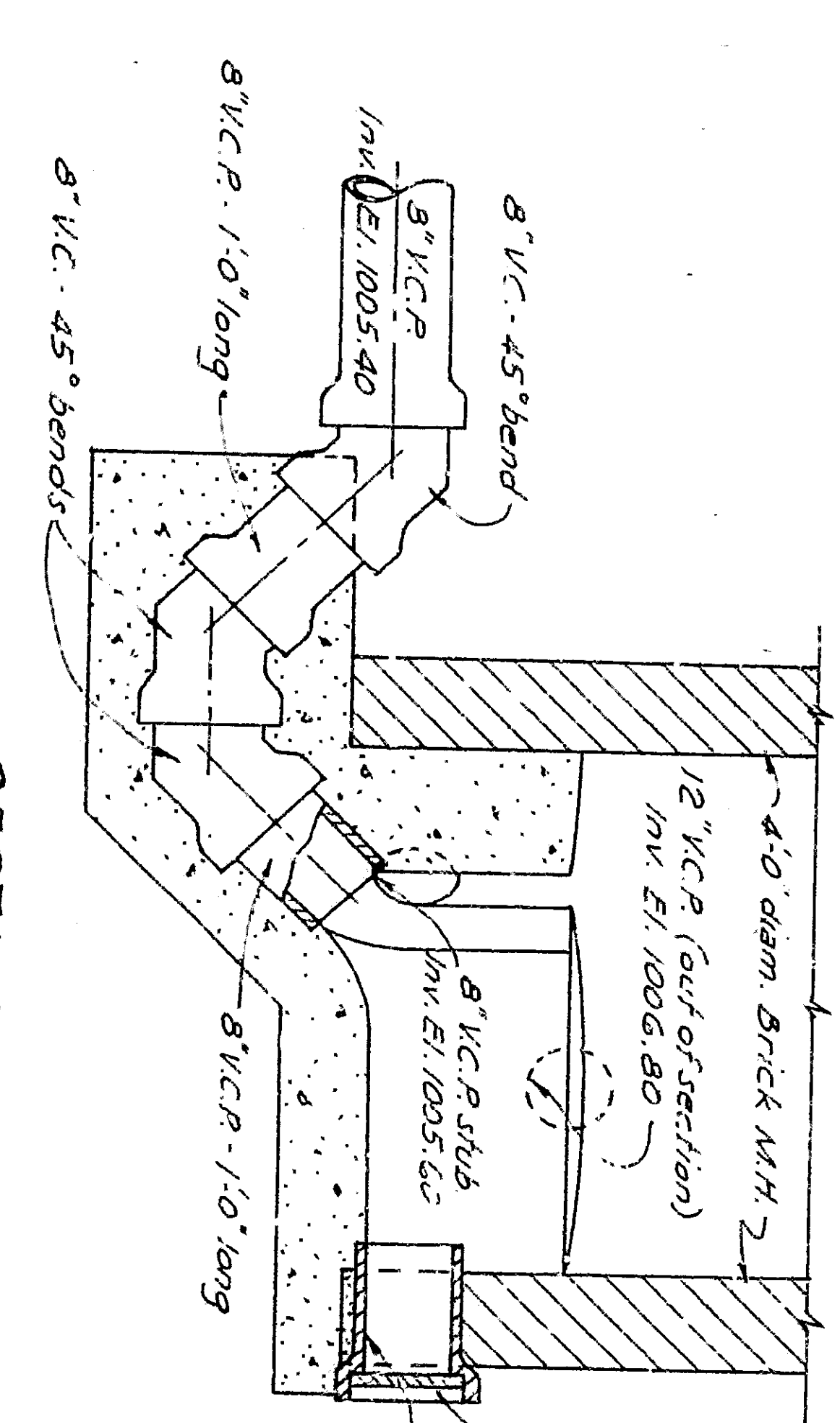
Concrete for special bases of Manholes 1 & 2 shall contain a min. of 6 bags of cement per cu. yd. The upper portion of Manholes 1 & 2 shall conform to the detail shown in the specifications for manholes.

Where new pipes connect to the existing manhole structure, the concrete shall be in a joint with the existing structure. The concrete shall be kept in place until the new structure is in place. The concrete shall be kept in place until the new structure is in place. The concrete shall be kept in place until the new structure is in place.

BASE DETAIL - MANHOLE No. 3

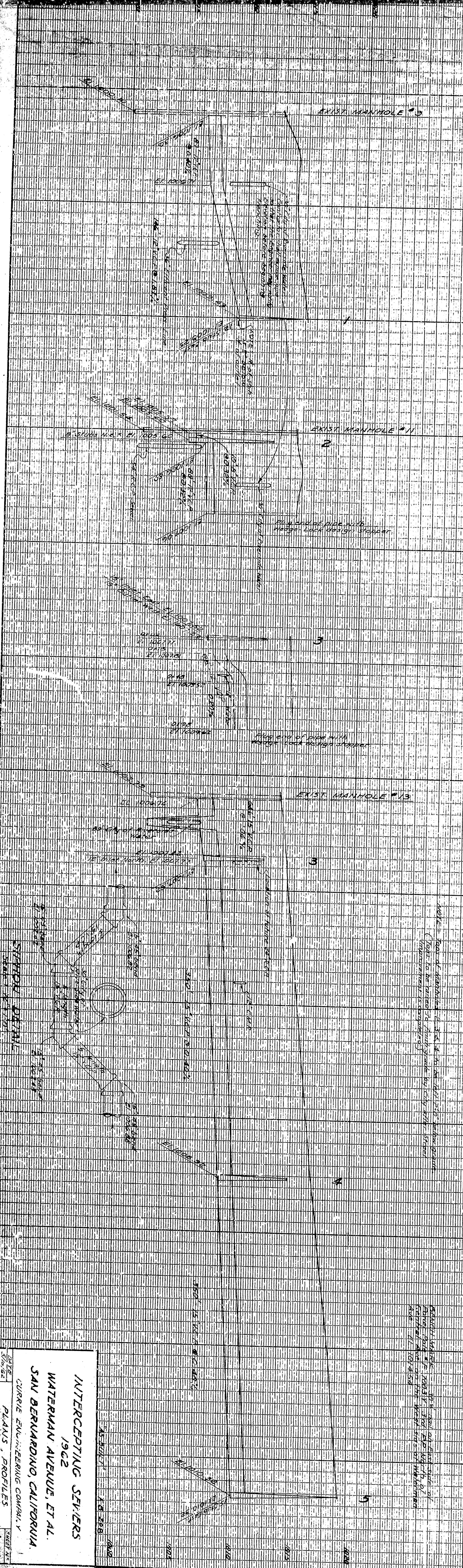


**PLAN
BASE DETAIL - MANHOLE No. 2**



SECTION

SCALE: HORIZ. 1" = 50'
VERT. 1" = 4'

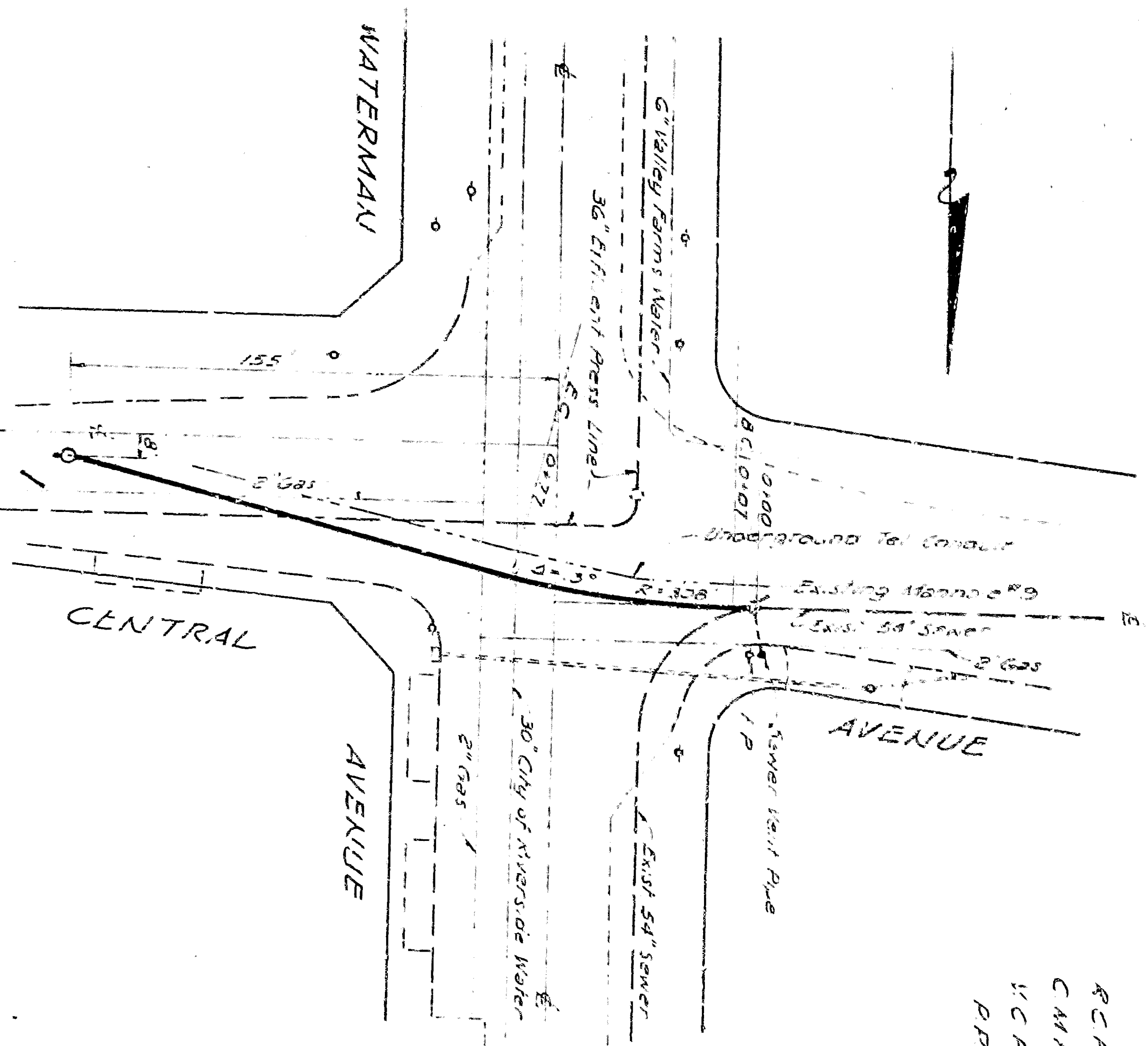


**INTERCEPTING SEWERS
1962
WATERMAN AVENUE ET AL.
SAN BERNARDINO, CALIFORNIA**

CURRIE ENGINEERING COMPANY
PLANS, PROFILES
AND DETAILS

Sheet No. 1 of 1

NOTE: All new work shown on this sheet is in San Bernardino County.

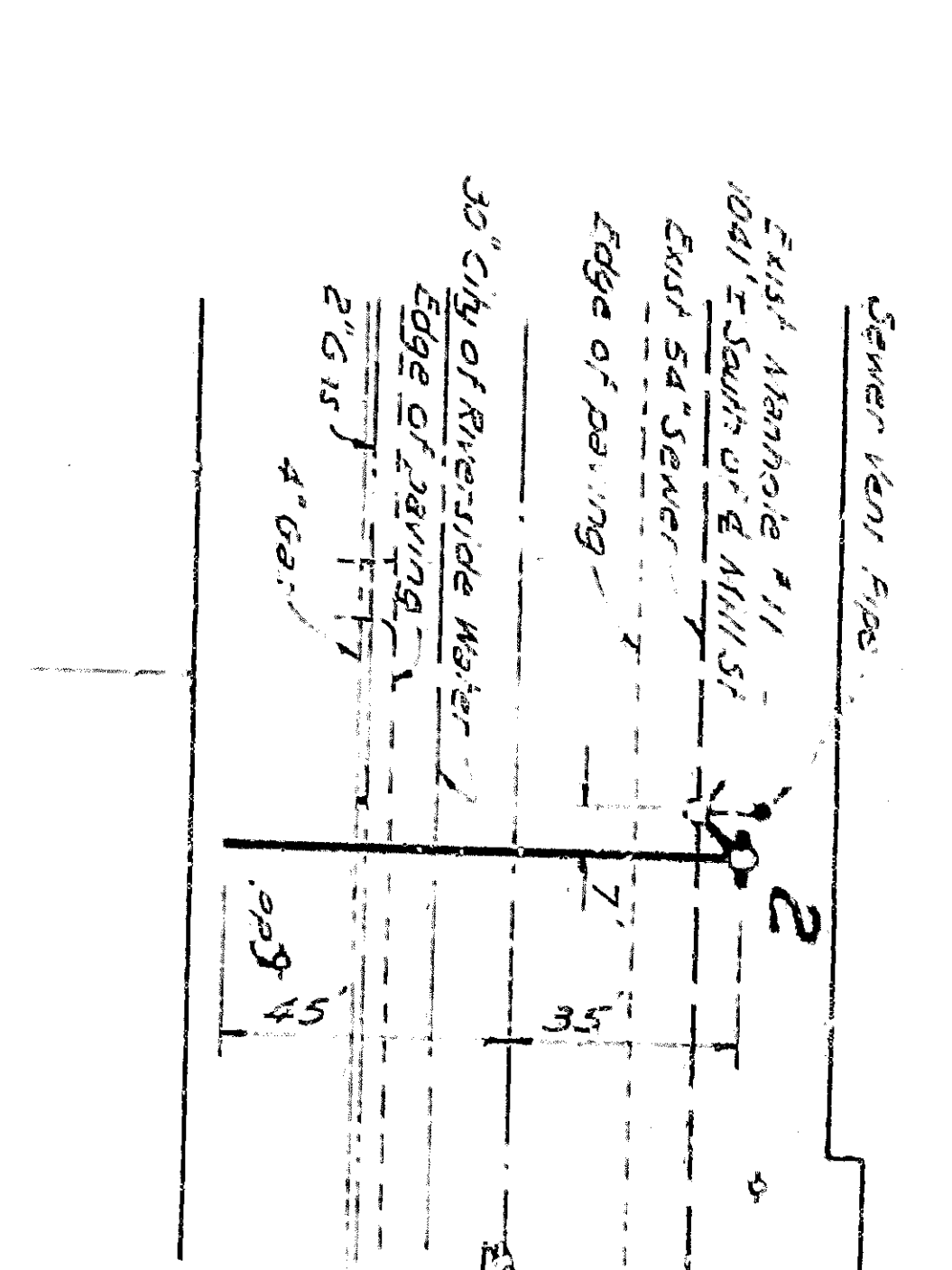


INTERSECTION - WATERMAN AVE. & CENTRAL AVE.

NOTE: No construction shown on this sheet is in San Bernardino County.

- LEGEND**
- Plan of Sewer Main
 - Plan of Sewer Manhole
 - Plan of 6" Pipe Branch with Wedge-Lock Stopper
 - Profile of Ground Line
 - Profile of Sewer Manhole
 - Elevation of Sewer Invert
 - Reinforced Concrete Pipe
 - Corrugated Metal Pipe
 - Wired Clay Pipe
 - Power or Telephone Pole

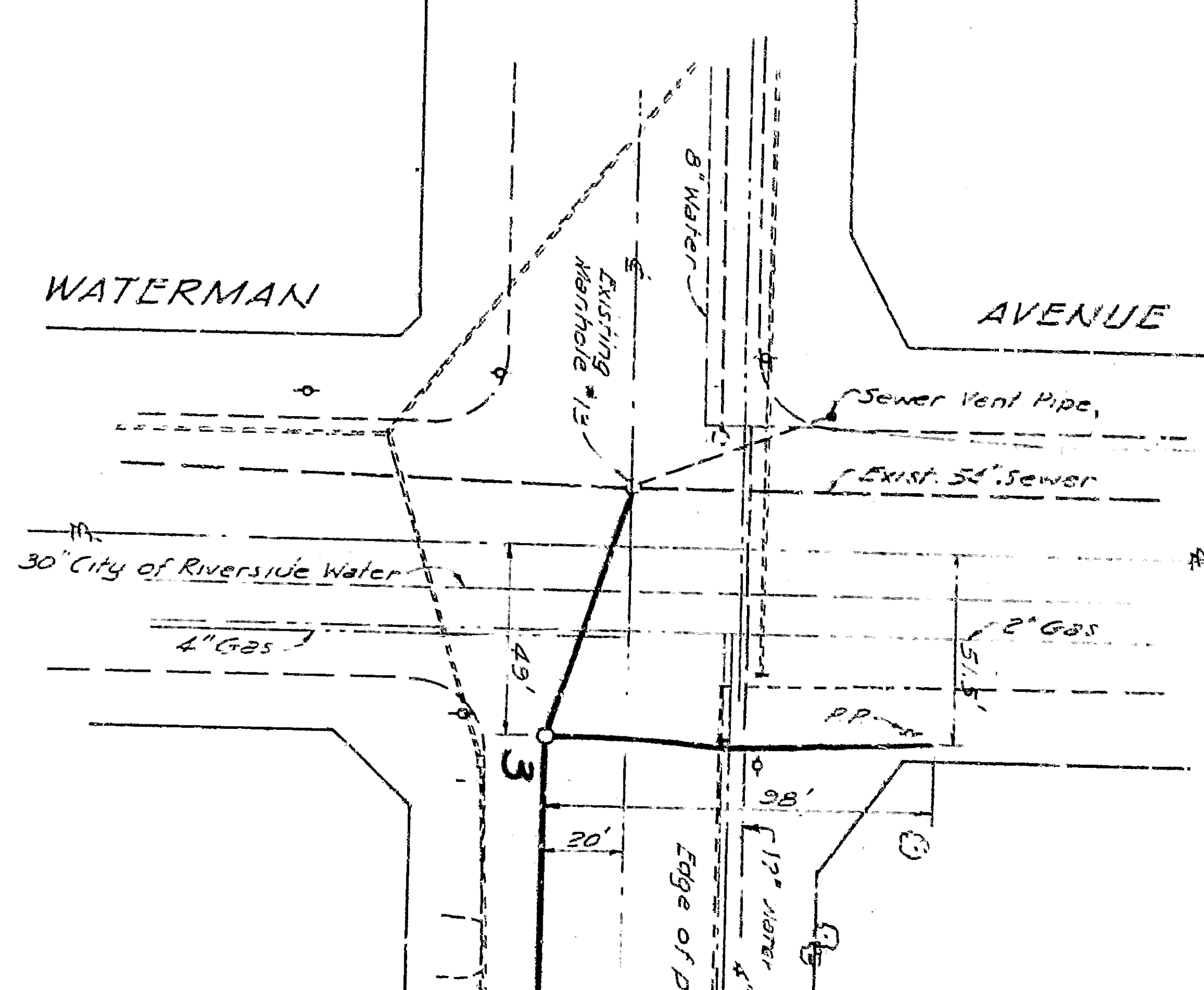
WATERMAN AVENUE



NOTES

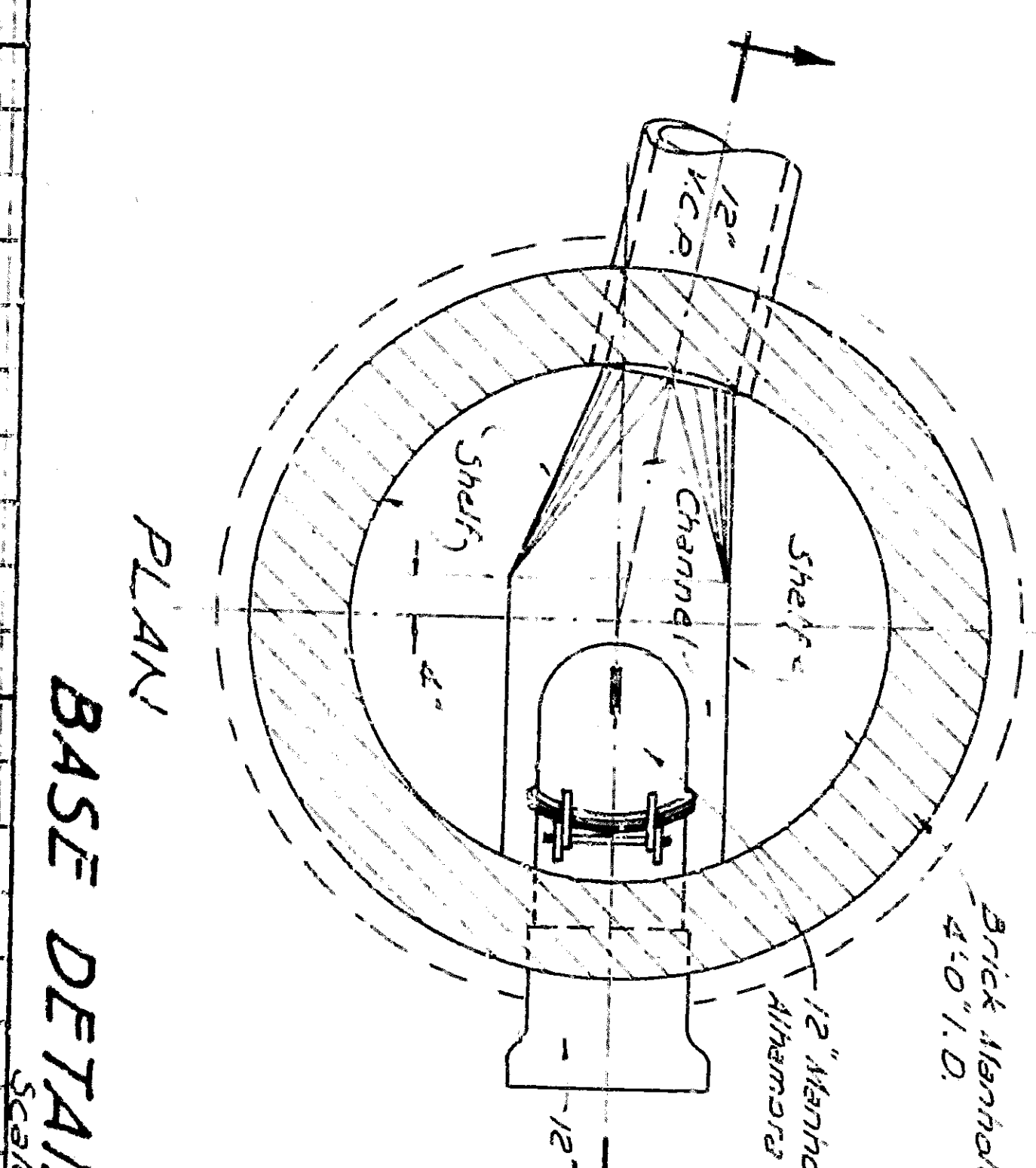
Concrete for special bases of Manholes 1 & 2 shall contain a min. of 6 bags of cement per cu. yd. The upper portion of Manholes 1 & 2 shall conform to the detail shown in the specifications for Manholes.

Where new pipes connect to the existing manhole repairs shall be made to the existing manhole which is large enough to accommodate the new manhole. The concrete shall be placed in the manhole and the opening around the pipe shall be completely filled with dry packed cement mortar.



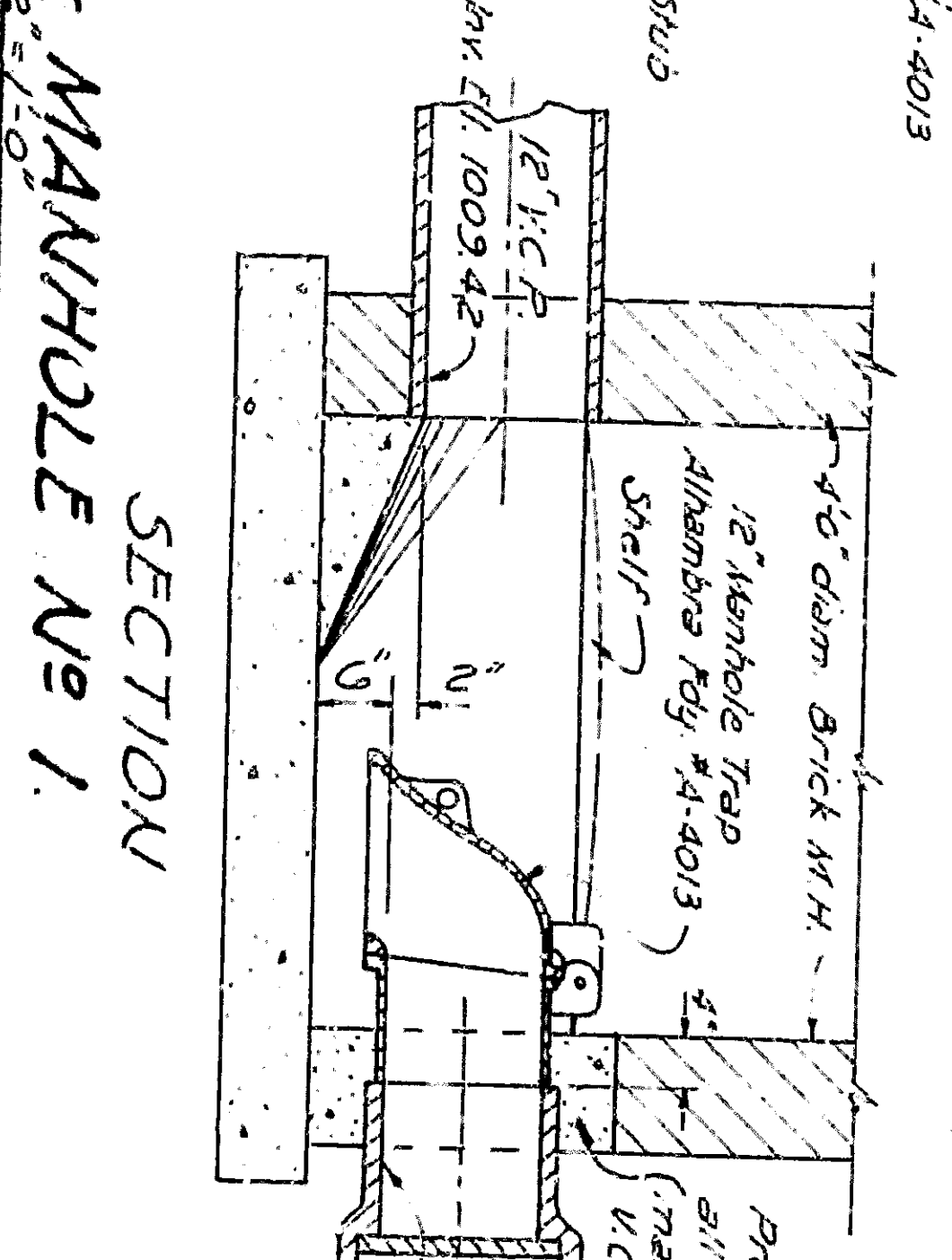
MILL STREET

BASE DETAIL - MANHOLE No 3

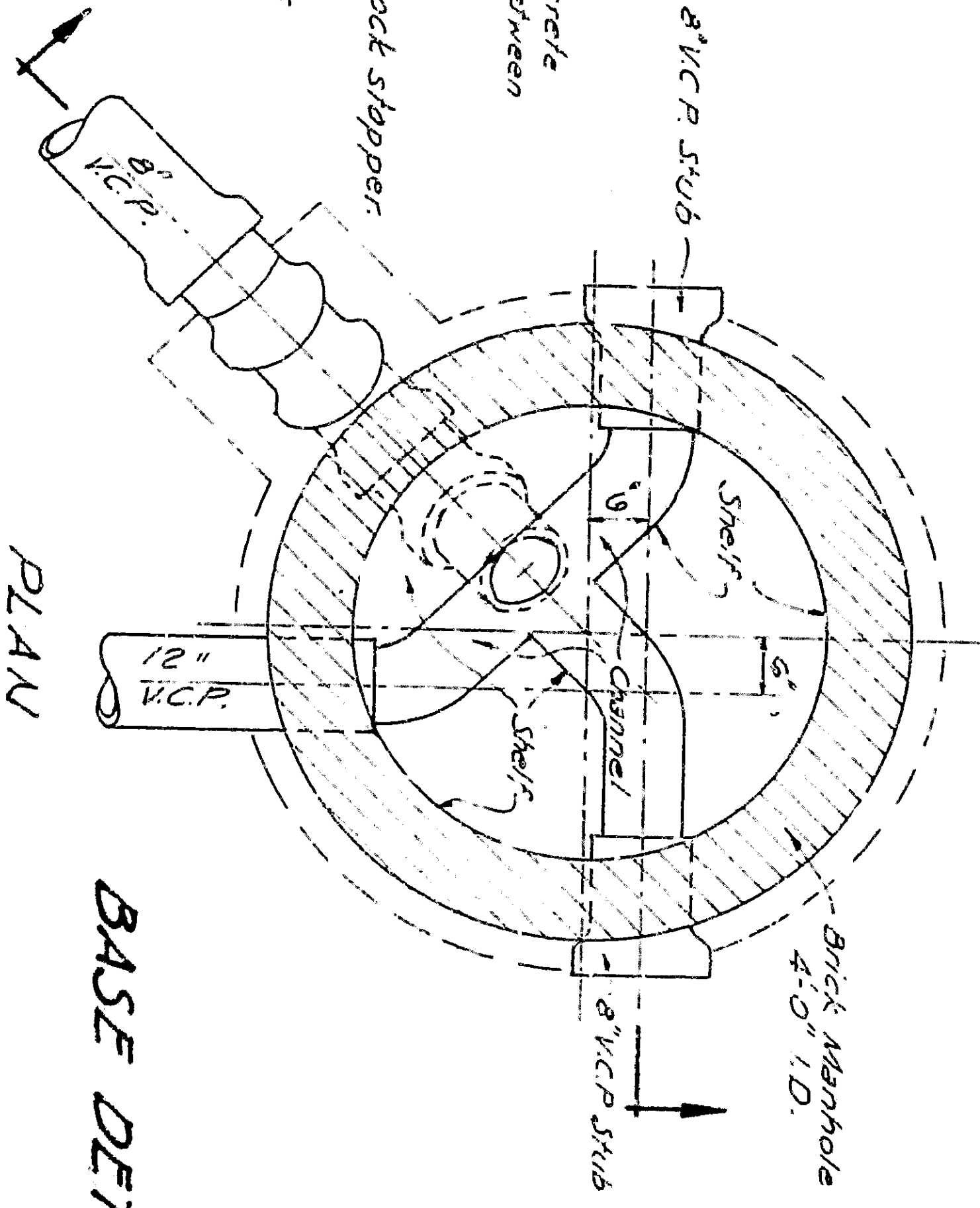


PLAN

BASE DETAIL - MANHOLE No 1

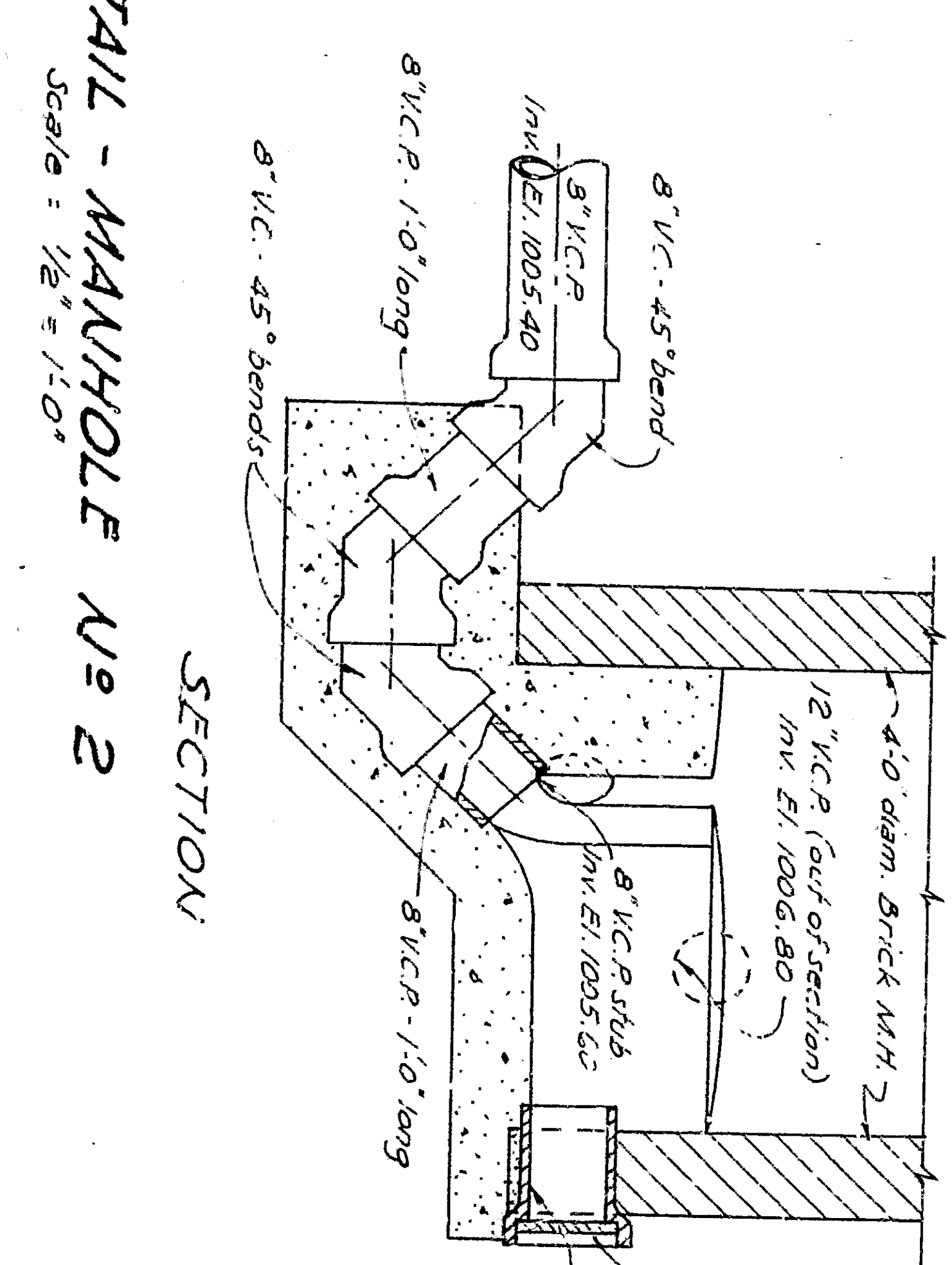


SECTION



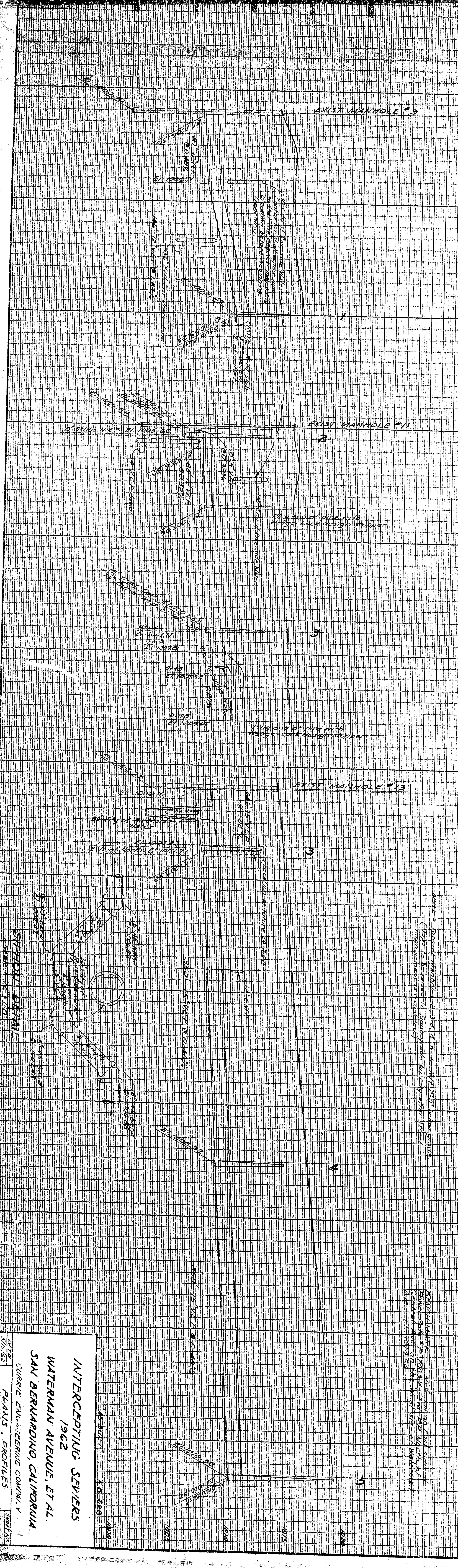
PLAN

BASE DETAIL - MANHOLE No 2



SECTION

SCALE: HORIZ. 1" = 50'
VERT. 1" = 4'



INTERCEPTING SEWERS
1962
WATERMAN AVENUE ET AL.
SAN BERNARDINO, CALIFORNIA
CURRIE ENGINEERING COMPANY
PLANS, PROFILES AND DETAILS
Sheet No. 1 of 1